

## Environmental Data and Governance Initiative Website Tracking Report

[envirodatagov.org](http://envirodatagov.org) | [edgi.websitemonitoring@protonmail.com](mailto:edgi.websitemonitoring@protonmail.com)



### Rewording of Language, Domain Names, and Titles on the Department of Transportation's Federal Highway Administration Environment Pages

April 13, 2017

Writing and review of this report was conducted and overseen by the members of EDGI's Website Monitoring Committee: Maya Anjur-Dietrich, Andrew Bergman, Gretchen Gehrke, Rebecca Lave, and Toly Rinberg, with contributions from Chris Amoss.

**EDGI DISCLAIMER** - *The information and images within this report are for general information purposes only. The scope of this report is limited to version tracking information of publicly available websites. EDGI has no control over the nature, content, or sustained availability of the websites we monitor. While EDGI works to assure that the information in this report is correct, that information is subject to the limitations of version tracking software, and is provided "as is." EDGI makes no representations or warranties of any kind, express or implied, about the completeness or reliability of this information, nor does EDGI intend to assess any agency or entity's intentions or rationale for the demonstrated changes to any webpages or other online content that appear in this report. Do not rely on the information in this report as predictive, or ascribe intent not presented within the report. In no event will EDGI or any of its members be liable for the use or misuse of the information in this report. Please consult with an appropriately qualified expert if you require qualitative evaluation of or advice about the content of this report.*

## Rewording of Language, Domain Names, and Titles on the Department of Transportation's Federal Highway Administration Environment Pages

The Department of Transportation's Federal Highway Administration (FHWA) has changed language and titles across multiple pages relating to environmental effects of transportation, such as replacing "climate change" and "greenhouse gases" with terms like "sustainability" and "emissions".

***Note:** These changes were first reported on by E&E News (February 17, 2017): [Highway agency drops mentions of climate change](#). They were subsequently covered by the Washington Post (February 17, 2017): [Federal Highway Administration changes mentions of 'climate change' to 'resilience' in transportation program](#)*

### Description

The DOT FHWA has renamed what was previously known as "The Sustainable Transport and Climate Change Team" to "The Sustainable Transportation and Resilience Team" and altered the language used to describe its members' roles. It has also systematically changed language relating to climate change, including the terms "climate change," "adaptation," "greenhouse gases," and "greenhouse gas pollution," either removing it entirely or replacing it, using terms like "sustainability," "extreme weather," "resilience," and "emissions," which each have a distinct meaning from the terms they have replaced and are commonly relied on to avoid discussing climate change. These changes occurred systematically across page titles, employee roles, and website domain names. This report covers these changes across six webpages.

The most notable changes to this website are summarized here:

1. **Website domain names were changed:**
  - /climate\_change/ to /sustainability/ (Pages 1-6)
  - /adaptation/ to /resilience/ (Page 2)
  - /mitigation/ to /energy/ (Page 3)
2. **Banner changed across multiple pages**
  - From "CLIMATE CHANGE", "CLIMATE ADAPTATION", and "CLIMATE MITIGATION" to "Sustainability" (Screenshots 1.1, 2.1, 3.1, 4.1, 5.1, 6.1)
3. **Page titles changed across multiple pages:**
  - "Climate Change and Transportation" to "Sustainable Transportation" (Change 1.1b)
  - "Adaptation" to "Resilience" (Change 2.1b)
  - "Greenhouse Gas Mitigation & Energy" to "Energy and Emissions" (Change 3.1b)
  - "Air Quality and Climate Change Highlights" to "Air Quality and Sustainability Highlights" (Change 5.1a)
4. **FHWA team title and duties changed:**

- “The Sustainable Transport and Climate Change Team” has been renamed “The Sustainable Transportation and Resilience Team” (Change 4.1a)
  - All four mentions of “GHG” in the team’s duties have been removed. (Change 4.1b)
5. **Removal of link for “US DOT Climate Adaptation Plan”** (Change 2.1f)
  6. **Removal of section: “Update to Riverine Hydraulic Engineering Circular (HEC) to Incorporate Climate Change”** (Change 6.1b)

The table below details the change in website domain names for the pages in this report. The “Previous URL” corresponding to a particular page now redirects to the “Current URL.” See [this supplementary sheet](#) for an explanation of the restructuring of the entire fhwa.dot.gov/environment/ domain.

<b><u>Page</u></b>	<b><u>Previous URL</u></b>	<b><u>Current URL</u></b>
1	fhwa.dot.gov/environment/climate_change/	fhwa.dot.gov/environment/sustainability/
2	fhwa.dot.gov/environment/climate_change/adaptation/	fhwa.dot.gov/environment/sustainability/resilience/
3	fhwa.dot.gov/environment/climate_change/mitigation/	fhwa.dot.gov/environment/sustainability/energy/
4	fhwa.dot.gov/environment/climate_change/contacts/	fhwa.dot.gov/environment/sustainability/contacts/
5	fhwa.dot.gov/environment/climate_change/newsletter/	fhwa.dot.gov/environment/sustainability/newsletter/
6	fhwa.dot.gov/environment/climate_change/adaptation/ongoing_and_current_research/	fhwa.dot.gov/environment/sustainability/resilience/ongoing_and_current_research/

## Detailed Description of Changes

### **Page 1: Climate Change - Sustainability**

- Previous URL: [https://www.fhwa.dot.gov/environment/climate\\_change/](https://www.fhwa.dot.gov/environment/climate_change/)
- Current URL: <https://www.fhwa.dot.gov/environment/sustainability/>
- Side-by-side View: 1/8/17 - 1/27/17
- Changes occurred between **Jan 8, 2017 6:05 PM ET** and **Jan 27, 2017 8:03 AM ET**

*Note: This unusually wide range of times is due to the fact that this page was not being tracked by software that EDGI uses—past versions were accessed using the Internet Archive.*

### **Screenshot 1.1**

(1.1a) Changed banner from “CLIMATE CHANGE” to “Sustainability”

(1.1b) Changed page title from “Climate Change & Transportation” to “Sustainable Transportation”

(1.1c) Summary was changed from “FHWA provides technical assistance to State, regional, and local transportation agencies to help our partners reduce greenhouse gas pollution and improve resilience to climate change impacts.” to “FHWA provides technical assistance to State, regional, and local transportation agencies to help our partners enhance sustainability, improve resilience, and reduce energy use and emissions on our highway system. These efforts improve project delivery, protect our highway system for the future, and reduce the cost of transportation.”

(1.1d) Removed text “Toward Low Carbon Transportation” linking URL

[www.fhwa.dot.gov/environment/climate\\_change/mitigation/publications/low\\_carbon/](http://www.fhwa.dot.gov/environment/climate_change/mitigation/publications/low_carbon/). This report can still be accessed from

<https://www.fhwa.dot.gov/environment/sustainability/energy/publications/>.

(1.1e) Removed text “Building Climate Resilient Transportation” linking URL

[www.fhwa.dot.gov/environment/climate\\_change/adaptation/publications/bcrt\\_brochure.cfm](http://www.fhwa.dot.gov/environment/climate_change/adaptation/publications/bcrt_brochure.cfm). This report can still be accessed from

<https://www.fhwa.dot.gov/environment/sustainability/resilience/publications/>.

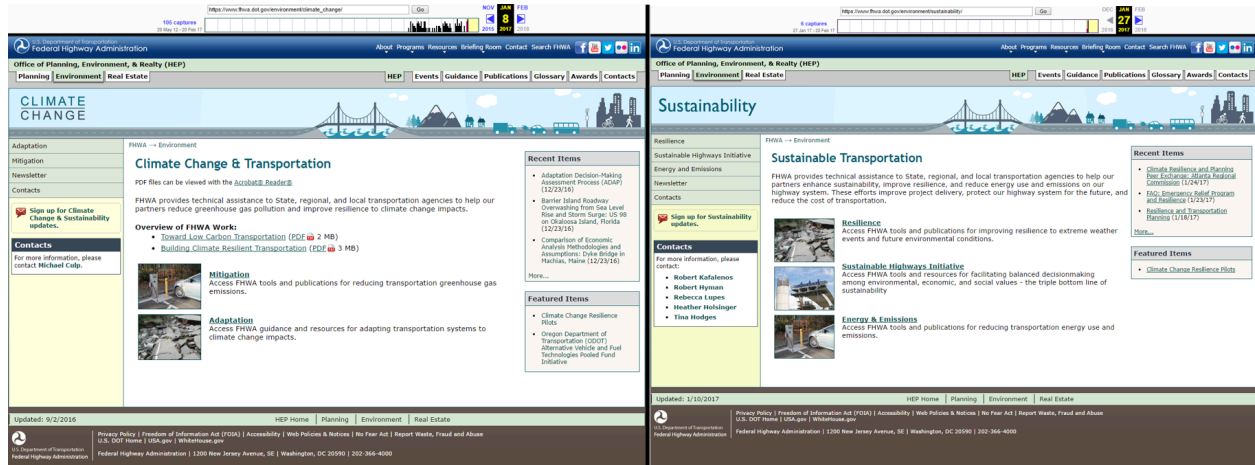
(1.1f) Changed “Sign up for Climate Change & Sustainability Updates” to “Sign up for Sustainability Updates”

(1.1g) Changed “Adaptation” to “Resilience” in sidebar menu and in main page content

(1.1h) Changed “Mitigation” to “Energy & Emissions” in sidebar menu and in main page content

(1.1i) Added “Sustainable Highway Initiative” link to sidebar menu and in main page content

(1.1j) Additional minor changes to “Recent Items”, “Featured Items”, and “Contacts”



Internet Archive: [previous version from Jan 8, 2017](#) and [current version from Jan 27, 2017](#)

## Page 2: Adaptation - Resilience

- Previous URL: [http://www.fhwa.dot.gov/environment/climate\\_change/adaptation/](http://www.fhwa.dot.gov/environment/climate_change/adaptation/)
- Current URL: <https://www.fhwa.dot.gov/environment/sustainability/resilience/index.cfm>
- Side-by-side View: 1/8/17 - 1/17/17
- Changes occurred between **Jan 8, 2017 6:06 PM ET** and **Jan 17, 2017 1:55 AM ET**

*Note: This unusually wide range of times is due to the fact that this page was not being tracked by software that EDGI uses—past versions were accessed using the Internet Archive.*

### Screenshot 2.1

(2.1a) Changed banner from “CLIMATE ADAPTATION” to “Sustainability”

(2.1b) Changed page title from “Adaptation” to “Resilience”

(2.1c) Changed introduction paragraph from “Climate change impacts, such as more frequent and intense heat waves and flooding, threaten the considerable federal investment in transportation infrastructure. FHWA is working with States and metropolitan areas to” to “Extreme weather, sea level change, and changes in environmental conditions threaten the considerable federal investment in transportation infrastructure. FHWA is working with States and metropolitan areas to increase the health and longevity of the Nation's Highways through”

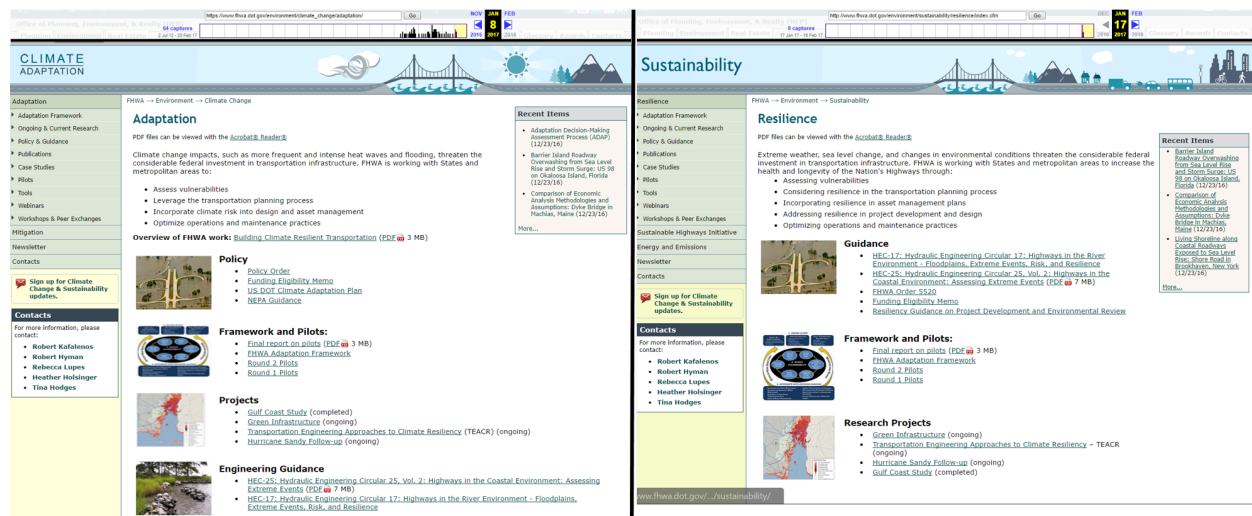
(2.1d) Changed bullets following from introduction paragraph from “Assess vulnerabilities, Leverage the transportation planning process, Incorporate climate risk into design and asset management, Optimize operations and maintenance practices” to “Assessing vulnerabilities, Considering resilience in the transportation planning process, Incorporating resilience in asset management plans, Addressing resilience in project development and design, Optimizing operations and maintenance practices”

(2.1e) Merged “Policy” and “Engineering Guidance” sections into “Guidance” section

(2.1f) Removed text “US DOT Climate Adaptation Plan” linking URL

<https://www.transportation.gov/mission/sustainability/2014-dot-climate-adaptation-plan>

(2.1g) Sidebar changes are the same as in Screenshot 1.1



Internet Archive: [previous version from Jan 8, 2017](#) and [current version on Jan 17, 2017](#)

### **Page 3: Greenhouse Gas Mitigation & Energy - Energy and Emissions**

- Previous URL: [https://www.fhwa.dot.gov/environment/climate\\_change/mitigation/](https://www.fhwa.dot.gov/environment/climate_change/mitigation/)
- Current URL: <https://www.fhwa.dot.gov/environment/sustainability/energy/>
- Side-by-side View: 1/8/17 - 1/9/17
- Changes occurred between **Jan 8, 2017 6:07 PM ET** and **Jan 9, 2017 5:47 PM ET**

*Note: This page was not being tracked by software that EDGI uses—past versions were accessed using the Internet Archive.*

#### **Screenshot 3.1**

(3.1a) Changed banner from “CLIMATE MITIGATION” to “Sustainability”

(3.1b) Changed page title from “Greenhouse Gas Mitigation & Energy” to “Energy and Emissions”

(3.1c) Changed introduction paragraph from “The transportation sector is the source of 29 percent of U.S. greenhouse gas (GHG) emissions. National commitments to reduce emissions 26-28 percent by 2025 and 80 percent or more by 2050, necessitate less energy use and a transition to alternative energy. FHWA is working with States and metropolitan areas to” to “Transportation accounts for half of urban air pollution and 70 percent of U.S. oil consumption, resulting in the United States sending over \$90 billion abroad to pay for petroleum imports in 2015. Better, more efficient transportation reduces pollution and puts money back into the American economy. FHWA is working with States and metropolitan areas to”

(3.1d) Changed bullets following from introduction paragraph from “Integrate GHG reduction analysis into transportation planning; Deploy infrastructure needed for low carbon fuels; Reduce GHG emissions in construction and maintenance practices; Improve system and travel efficiencies” to “Improve system performance, efficiency and project delivery; Expand transportation choices; Reduce emissions and other environmental impacts; Establish a national network of alternative fueling infrastructure.”

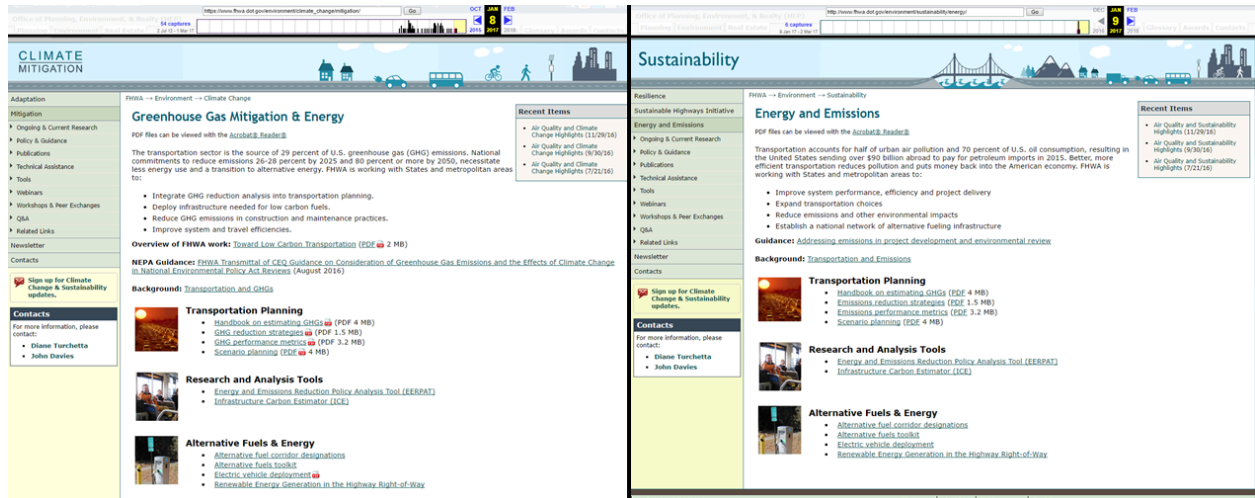
(3.1e) Changed section title from “Transportation and GHGs” to “Transportation and Emissions” in main page content

(3.1f) Changed section title from “NEPA Guidance” to “Guidance” and changed the text linking the URL

[www.fhwa.dot.gov/environment/climate\\_change/adaptation/policy\\_and\\_guidance/ghgnepa.cfm](https://www.fhwa.dot.gov/environment/climate_change/adaptation/policy_and_guidance/ghgnepa.cfm)

from “FHWA Transmittal of CEQ Guidance on Consideration of Greenhouse Gas Emissions and the Effects of Climate Change in National Environmental Policy Act Reviews” to “Addressing emissions in project development and environmental review”

(3.1g) Sidebar changes are the same as in Screenshot 1.1



Internet Archive: [previous version from Jan 8, 2017](#) and [current version on Jan 9, 2017](#)



## Page 4: Contacts

- Previous URL: [http://www.fhwa.dot.gov/environment/climate\\_change/contacts/](http://www.fhwa.dot.gov/environment/climate_change/contacts/)
- Current URL: <https://www.fhwa.dot.gov/environment/sustainability/contacts/>

*Note: EDGI began tracking the .../sustainability/contacts page on Jan 29, 2017 1:25 AM ET*

## Screenshot 4.1

- Side-by-side View: 7/26/16 - 3/7/17
- Changes occurred between **July 26, 2016 4:15 AM ET** and **Feb 2, 2017 11:42 PM ET**

*Note: This unusually wide range of times is due to the fact that this page was not being tracked by software that EDGI uses—past versions were accessed using the Internet Archive.*

(4.1a) Changed “Sustainable Transport and Climate Change Team” to “Sustainable Transportation and Resilience Team”

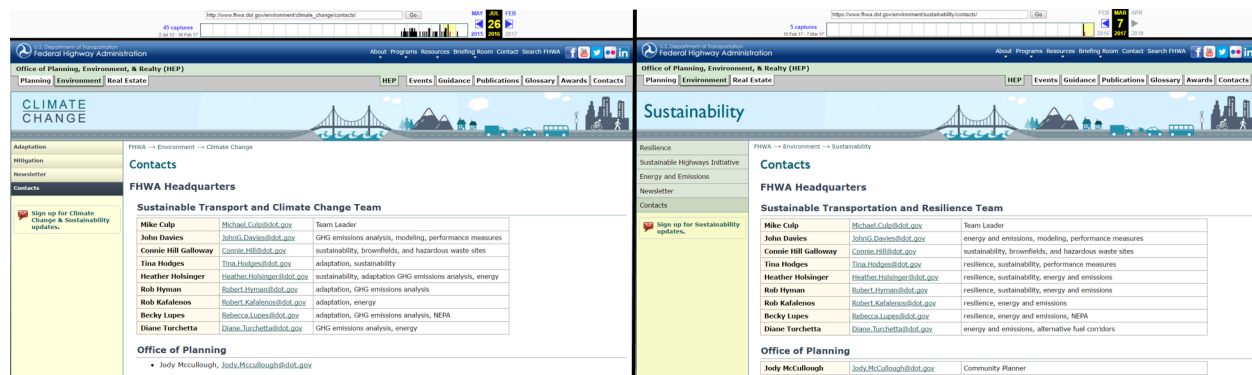
(4.1b) Changed employee role description from “GHG emissions analysis” to “energy and emissions”

(4.1c) Changed employee role descriptions from “adaptation” to “resilience”

(4.1d) Added “resilience” to one employee role description

(4.1e) Changed employee role descriptions from “energy” to “alternative fuel corridors”

(4.1f) Sidebar changes are the same as in Screenshot 1.1



**Internet Archive Page:** See links for Screenshot 4.2 below

## Screenshot 4.2

- Side-by-side View: 1/29/17 - 2/2/17
- Changes occurred between **Feb 2, 2017 12:15 AM ET** and **Feb 2, 2017 11:42 PM ET**

*Note: This comparison contains a subset of the changes found in Screenshot 4.1, pertaining only to the body of the page and not the banner or sidebar. It is provided here as an aid to help highlight text differences between the versions and identify a narrower range of times for the change. This page was tracked by software that EDGI uses as of Jan 29, 2017 1:25 AM ET*

Comparison of <https://www.fhwa.dot.gov/environment/sustainability/contacts/> - history - enable javascript - view as gist

rendered: side-by-side

Jan 29 2017 1:25 AM

Feb 2 2017 11:42 PM

Office of Planning, Environment, & Realty (HEP)
Planning Environment Real Estate HEP Events Guidance Publications Glossary Awards Contacts

Sustainability

Resilience
Sustainable Highways Initiative
Energy and Emissions
Newsletter
Contacts
Sign up for
Sustainability updates.

FHWA → Environment → Sustainability

### Contacts

#### FHWA Headquarters

#### Sustainable **Transport** and **Climate Change** Team

Mike Culp	<a href="mailto:Michael.Culp@dot.gov">Michael.Culp@dot.gov</a>	Team Leader
John Davies	<a href="mailto:JohnG.Davies@dot.gov">JohnG.Davies@dot.gov</a>	<b>GHG emissions analysis</b> , modeling, performance measures
Connie Hill Galloway	<a href="mailto:Connie.Hill@dot.gov">Connie.Hill@dot.gov</a>	<b>sustainability</b> , brownfields, and hazardous waste sites
Tina Hodges	<a href="mailto:Tina.Hodges@dot.gov">Tina.Hodges@dot.gov</a>	<b>adaptation, sustainability</b>
Heather Holsinger	<a href="mailto:Heather.Holsinger@dot.gov">Heather.Holsinger@dot.gov</a>	sustainability, <b>adaptation</b> <b>GHG emissions analysis</b> , energy
Rob Hyman	<a href="mailto:Robert.Hyman@dot.gov">Robert.Hyman@dot.gov</a>	<b>adaptation, GHG emissions analysis</b>
Rob Kafalenos	<a href="mailto:Robert.Kafalenos@dot.gov">Robert.Kafalenos@dot.gov</a>	<b>adaptation</b> , energy
Becky Lupes	<a href="mailto:Rebecca.Lupes@dot.gov">Rebecca.Lupes@dot.gov</a>	<b>adaptation, GHG emissions analysis</b> , NEPA
Diane Turchetta	<a href="mailto:Diane.Turchetta@dot.gov">Diane.Turchetta@dot.gov</a>	<b>GHG emissions analysis, energy</b>

Office of Planning, Environment, & Realty (HEP)
Planning Environment Real Estate HEP Events Guidance Publications Glossary Awards Contacts

Sustainability

Resilience
Sustainable Highways Initiative
Energy and Emissions
Newsletter
Contacts
Sign up for
Sustainability updates.

FHWA → Environment → Sustainability

### Contacts

#### FHWA Headquarters

#### Sustainable **Transportation** and **Resilience** Team

Mike Culp	<a href="mailto:Michael.Culp@dot.gov">Michael.Culp@dot.gov</a>	Team Leader
John Davies	<a href="mailto:JohnG.Davies@dot.gov">JohnG.Davies@dot.gov</a>	<b>energy and emissions</b> , modeling, performance measures
Connie Hill Galloway	<a href="mailto:Connie.Hill@dot.gov">Connie.Hill@dot.gov</a>	<b>sustainability</b> , brownfields, and hazardous waste sites
Tina Hodges	<a href="mailto:Tina.Hodges@dot.gov">Tina.Hodges@dot.gov</a>	<b>resilience, sustainability, performance measures</b>
Heather Holsinger	<a href="mailto:Heather.Holsinger@dot.gov">Heather.Holsinger@dot.gov</a>	<b>resilience</b> , sustainability, <b>energy and emissions</b>
Rob Hyman	<a href="mailto:Robert.Hyman@dot.gov">Robert.Hyman@dot.gov</a>	<b>resilience, sustainability, energy and emissions</b>
Rob Kafalenos	<a href="mailto:Robert.Kafalenos@dot.gov">Robert.Kafalenos@dot.gov</a>	<b>resilience</b> , energy <b>and emissions</b>
Becky Lupes	<a href="mailto:Rebecca.Lupes@dot.gov">Rebecca.Lupes@dot.gov</a>	<b>resilience, energy and emissions</b> , NEPA
Diane Turchetta	<a href="mailto:Diane.Turchetta@dot.gov">Diane.Turchetta@dot.gov</a>	<b>energy and emissions, alternative fuel corridors</b>

Internet Archive Page: [previous version July 26, 2016](#) and [current version Mar 7, 2017](#)

## Page 5: Air Quality and Sustainability Highlights

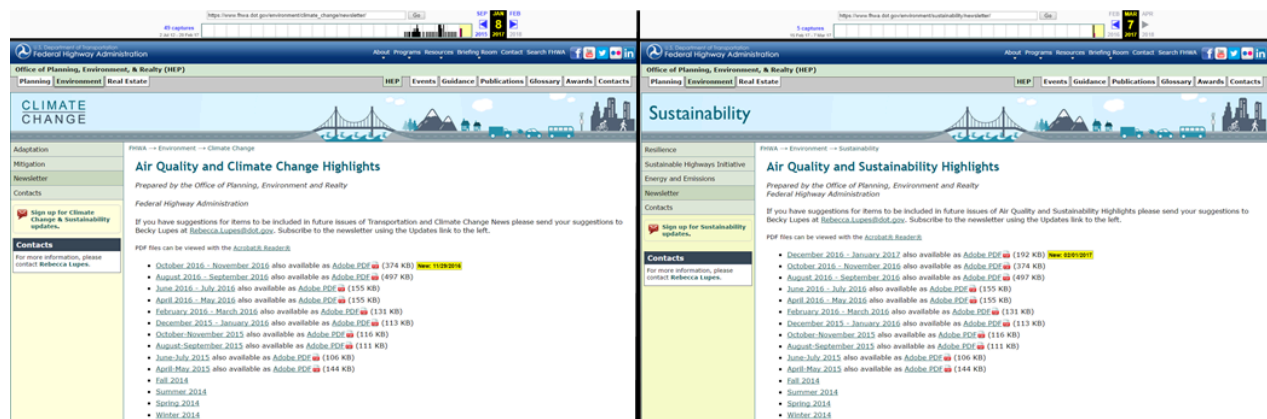
- Previous URL: [https://www.fhwa.dot.gov/environment/climate\\_change/newsletter/](https://www.fhwa.dot.gov/environment/climate_change/newsletter/)
- Current URL: <https://www.fhwa.dot.gov/environment/sustainability/newsletter/>
- Side-by-side View: 1/8/17 - 3/7/17
- Changes occurred between **Jan 8, 2017 6:08 PM ET** and **Mar 7, 2017 3:53 PM ET**

*Note: This unusually wide range of times is due to the fact that this page was not being tracked by software that EDGI uses—past versions were accessed using the Internet Archive.*

### Screenshot 5.1

(5.1a) Changed page title from “Air Quality and Climate Change Highlights” to “Air Quality and Sustainability Highlights”

(5.1b) Changed “Transportation and Climate Change News” to “Air Quality and Sustainability Highlights”



Internet Archive: [previous version Jan 8, 2017](#) and [current version Mar 7, 2017](#)

## Page 6: Ongoing and Current Research

- Previous URL:  
[http://www.fhwa.dot.gov/environment/climate\\_change/adaptation/ongoing\\_and\\_current\\_research/](http://www.fhwa.dot.gov/environment/climate_change/adaptation/ongoing_and_current_research/)
- Current URL:  
[https://www.fhwa.dot.gov/environment/sustainability/resilience/ongoing\\_and\\_current\\_research/](https://www.fhwa.dot.gov/environment/sustainability/resilience/ongoing_and_current_research/)
- Side-by-side View: 8/18/16 - 3/3/17
- Changes occurred between **Aug 18, 2016 2:27 AM ET** and **Mar 3, 2017 00:12 AM ET**

*Note: This unusually wide range of times is due to the fact that this page was not being tracked by software that EDGI uses—past versions were accessed using the Internet Archive.*

## Screenshot 6.1

(6.1a) Changed banner from “CLIMATE ADAPTATION” to “Sustainability”

(6.1b) Removed section: “Update to Riverine Hydraulic Engineering Circular (HEC) to Incorporate Climate Change - FHWA is updating publication HEC-17 with a second edition entitled, Highways in the Riverine Environment- Floodplains, Extreme Events, Risk and Resilience. The update will provide technical guidance and methodologies for considering/incorporating floodplain management, risk, extreme events (i.e., climate change and extreme weather), resilience, and adaptation considerations when addressing highway planning and design within the riverine environment. The reference manual will particularly focus on issues related to hydrology, statistics, risk assessments, and regulatory issues associated with precipitation and stream flow in a riverine environment. It follows HEC 25 Volume 2 - Highways in the Coastal Environment: Assessing Extreme Events.”

(6.1c) Sidebar changes are the same as in Screenshot 1.1

The image shows a side-by-side comparison of two FHWA website pages. The left page is titled "CLIMATE ADAPTATION" and the right page is titled "Sustainability". Both pages have a sidebar on the left with navigation links and a main content area. The main content area on the left page is titled "Ongoing and Current Research" and contains a list of links to various documents. The main content area on the right page is titled "Resilience" and contains a list of links to various documents. The sidebar on the left page includes links to "Adaptation Framework", "Ongoing & Current Research", "Policy & Guidance", "Case Studies", "Pilot", "Tools", "Webinars", and "Workshops & Peer Exchanges". The sidebar on the right page includes links to "Resilience", "Ongoing & Current Research", "Policy & Guidance", "Case Studies", "Pilot", "Tools", "Webinars", and "Workshops & Peer Exchanges".

Internet Archive: [previous version Aug 18, 2016](#) and [current version Mar 3, 2017](#)